

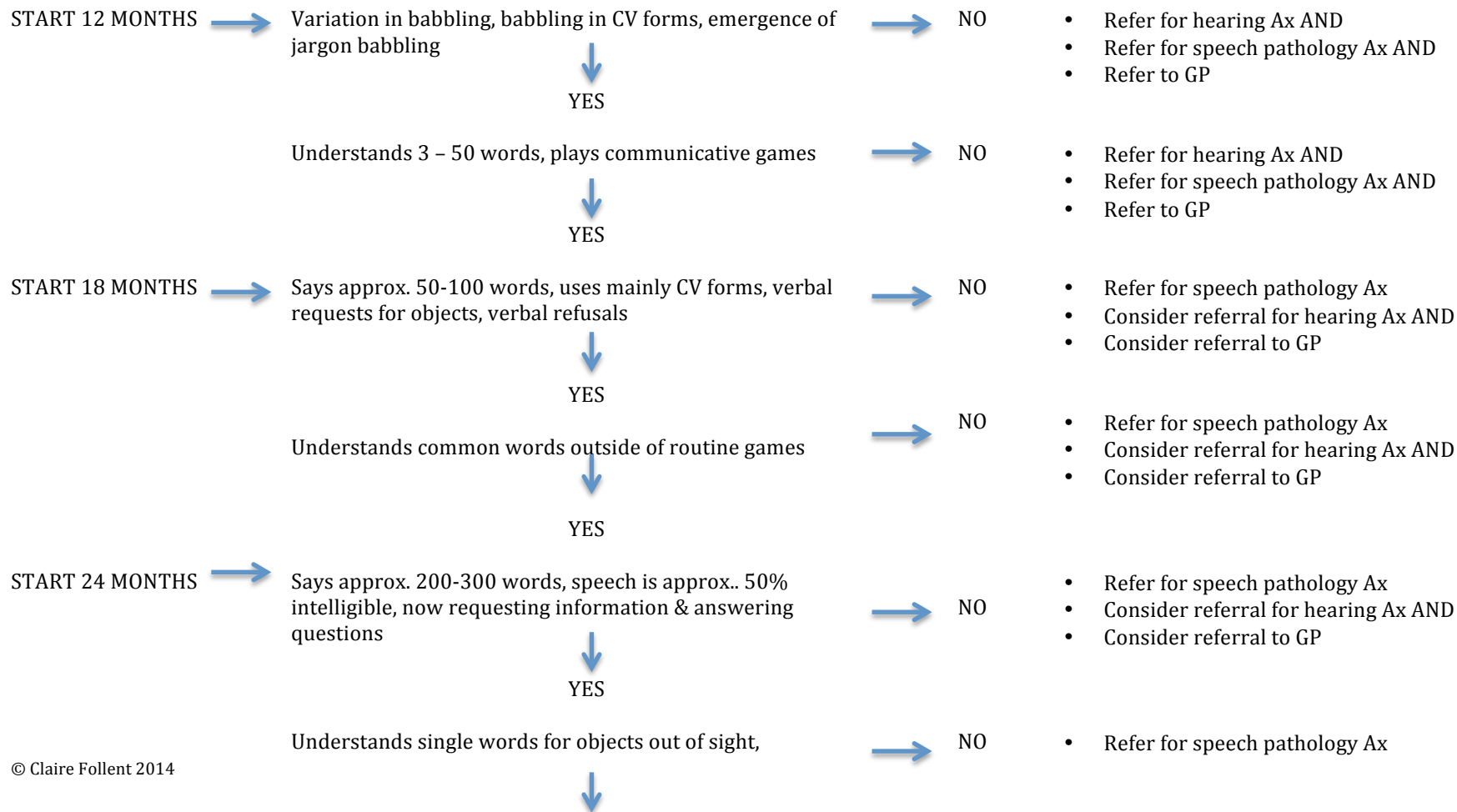


CLAIRE FOLLENT

SPEECH PATHOLOGIST

t: 0413 958 988 e: cfollent@gmail.com

Decision Making Flow Chart for Speech Pathology Referral





CLAIRE FOLLENT

SPEECH PATHOLOGIST

t: 0413 958 988 e: cfollent@gmail.com

understands 2-word relations similar to those expressed e.g.
girl drink, bounce ball, man's hat

- Consider referral for hearing Ax AND
- Consider referral to GP

YES

START 36 MONTHS → Speech is 75% intelligible, topics are continued by adding info, use of language in play increases, understanding & use of spatial terms in, on, under etc → NO

- Refer for speech pathology Ax

↓
YES

START 42 MONTHS → Common speech simplification processes are resolving e.g. leaving off last sounds in words, deleting syllables in words
Understands basic colour words, kinship terms → NO

- Refer for speech pathology Ax

↓
YES

START 48 MONTHS → Understands shapes & size vocab, uses complex sentences
Reports on past events, demonstrates reasoning, predicting & expressing empathy
Maintains interactions & creates imaginary roles → NO

- Refer for speech pathology Ax

↓
YES

START 60 MONTHS → Speech is 100% intelligible with no speech sound errors
Knowledge of letter names & sounds → NO

- Refer for speech pathology Ax